

wiAIR[®]

Cost Performance Air Cushion Machine

WiAIR 1200





In 2020, due to the influence of COVID-19, many people were forced to stay at home, unable to go shopping, more and more people chose to buy various kinds of articles and food on the Internet. The supplier was ushering in a new wave of development. With the continuous impact of the epidemic, online shopping has become a trend and an indispensable part of people's daily life.





WiAIR 1200

Product position:

Desktop entry level

Market position:

Small e-commerce

Small logistics center

Retail store

SOHO / Office

Internet platform

WiAIR 1200 is the upgrade version of WiAIR 1000, more functions and higher work efficiency with higher feeding & air pouch build up speed, and it is a very cost-effective air cushion machine.

Product features

WiAIR 1200 adopts ergonomics & streamline design, A4 footprint does not take up too much space and can be placed on the desktop at any time to use. With larger capacity up to 700 meters of film roll does not need to replace film roll frequently than other air cushion machine in market, air volume, temperature and feeding speed can be adjusted. Under the delicate shape, has not lost the ability of professional air cushion machine, compare the functions to others, WiAIR1200 almost cover all feature could have, compact size but energetic.



A4 size footprint

A4 footprint does not take up too much space and can be placed on the desktop at any time to use.



Auto on/off rollers

The intelligent pressing wheel of the machine can close automatically without manual operation.



No Teflon belt

The hot roller outside coated with Teflon design is no Teflon belt require which can reduce the consumption parts cost.



Temperature Adjustable

Speed Adjustable

Air volume Adjustable



WiAIR 1200 equipped with high/middle/low range temperature control function, air pouch feeding speed adjustable up to 12 m/min, air volume adjustable, temperature adjustable, easy tuning the adaptive density of air pouch for variance applications.



Up to 700 m/roll max.

One installation can be effective use by a longer time, no need to frequently change the film roll.

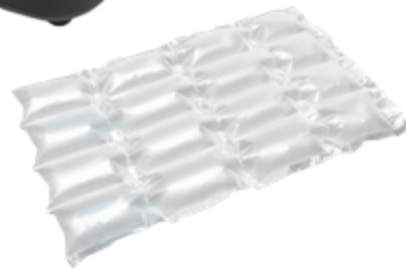
Specifications

DUAL II www.dual.hr

wiAIR[®]



Wrap up bag



4-section bag



Pillow bag



Pocket bag

Model	WiAIR 1200
Dimension	295x225x180 mm
Speed	Adjustable 12 m/min, max.
Air volume	Adjustable
Temperature	Adjustable
Features	No belt required
Voltage	220V/50Hz
Power	300W
Film specifications	
Type	HDPE/LDPE
Width	400mm, max.
Thickness	0.013~0.02mm
Length	500m, max.
Core Diameter	50.8mm
Cushion bag	Wrap up bag, 4-section bag, Pillow bag, Pocket bag

Applications

WiAIR 1200 air cushion machine is design for small e-commerce business, small office packaging ,mail or express parcel delivery protection, produce as a void filling or wrap up packaging materials, it can also be used in retail store or outlets parcel package protection.



Small e-commerce business



Small office



Express delivery center



Retail store

Applications

WiAIR1200 can blow void fill pillow, wrapping bubble, 4-section bubble and cushioning bubble bag, it can be used in various situations that need to fill space or package items, such as medical supplies, cosmetics, digital electronic products, books, food, bags, fragile goods, etc.

